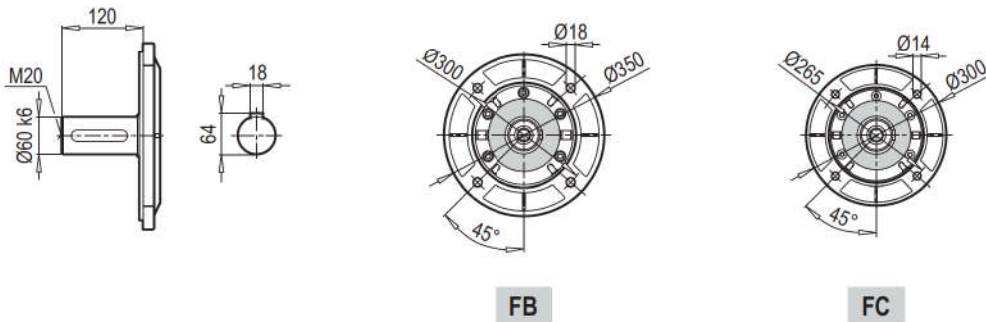
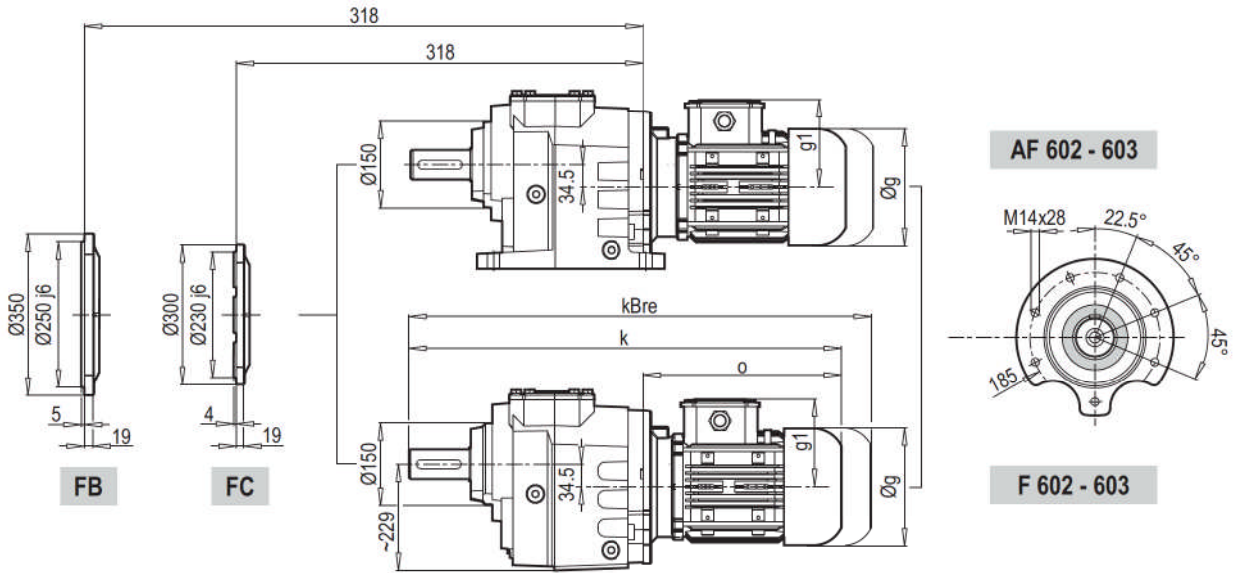
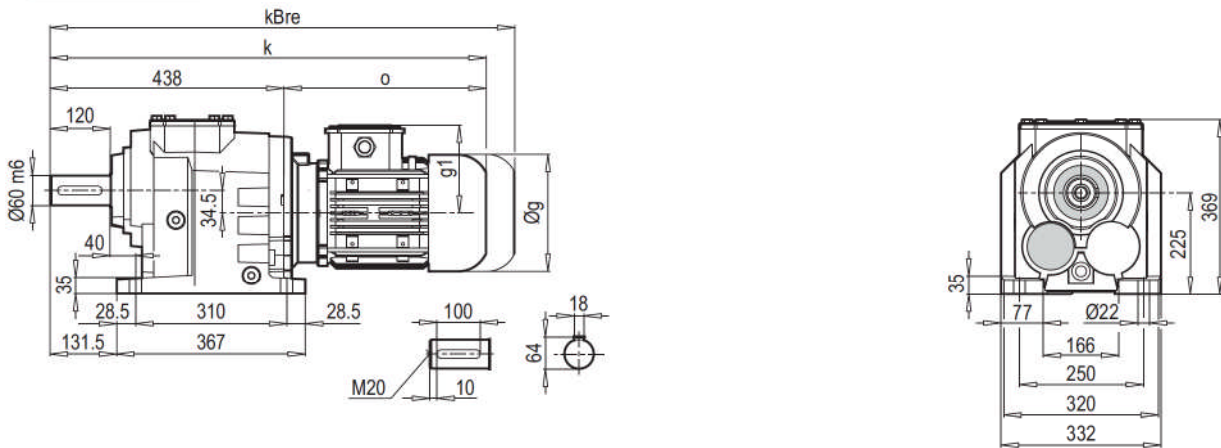
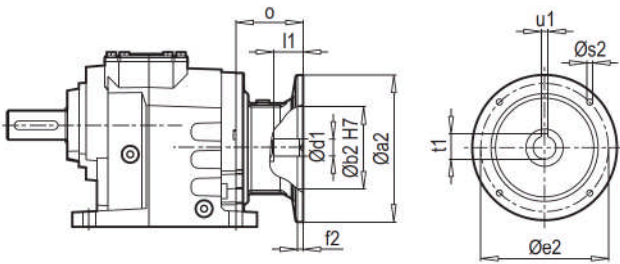


**A 602 - 603**

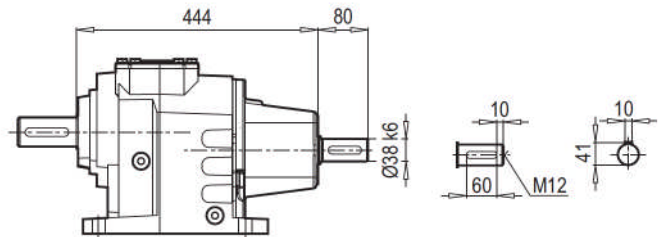


	90 L	100 L	112 M	132 S	132 M	160 M/L	180 M/L
<b>g</b>	193	217	232	279	279	323	370
<b>g1</b>	151	160	168	182	182	200	248
<b>k</b>	741	764	818	824	859	946	1011
<b>kBre</b>	814	845	898	932	1000	1098	1173
<b>o</b>	303	326	380	386	421	508	573

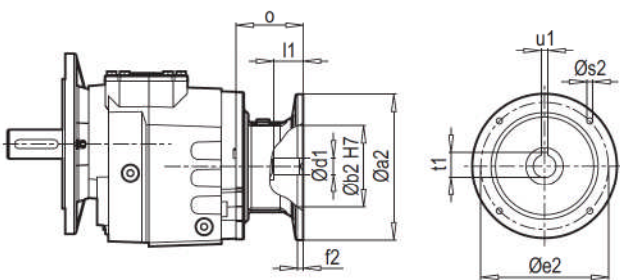
A 602-603 PAM B5/B14



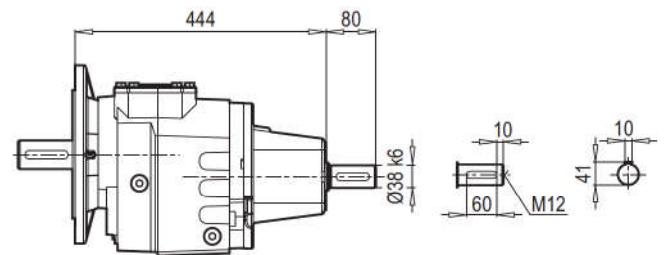
A 602-603 W



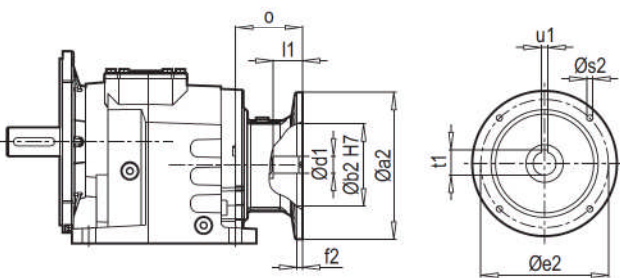
F 602-603 PAM B5/B14



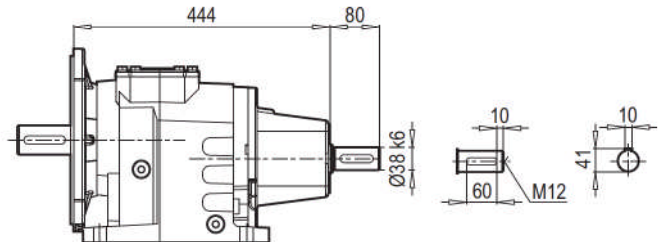
F 602-603 W



AF 602-603 PAM B5/B14



AF 602-603 W



W ~ Kg	
A/F 602-603	90

Typ / Type Tip / Tipo Type / Tipo	PAM B5	Øa2	Øb2	Øe2	f2	Øs2	Ød1	l1	t1	u1	o
A/F 602 A/F 603	90	200	130	165	5	M10	24	52	27.3	8	61
	100	250	180	215	5.5	M12	28	62	31.3	8	76
	112	250	180	215	5.5	M12	28	62	31.3	8	76
	132	300	230	265	5.5	M12	38	82	41.3	10	101
	160	350	250	300	7	M16	42	112	45.3	12	148
	180	350	250	300	7	M16	48	112	51.8	14	148

~ Kg	
PAM B5	A/F 602-603
90	81
100	85
112	85
132	88
160	94
180	94

Typ / Type Tip / Tipo Type / Tipo	PAM B14	Øa2	Øb2	Øe2	f2	Øs2	Ød1	l1	t1	u1	o
A/F 602 A/F 603	90	140	95	115	3	9	24	52	27.3	8	61
	100	160	110	130	3.5	9	28	62	31.3	8	76
	112	160	110	130	3.5	9	28	62	31.3	8	76
	132	200	130	165	3.5	11	38	82	41.3	10	101

~ Kg	
PAM B14	A/F 602-603
90	78
100	80
112	80
132	86

Type Typ / Tipo / Type / Tipo	iges	4-pol 50Hz 1400rpm n2 [min-1]	M <sub>amax</sub> f <sub>B</sub> =1 4 - pol. [Nm]	P <sub>1max</sub>		W	f <sub>B</sub> ≥ 1	PAM - IEC								
				4 - pol. 1400rpm [kW]	FR1 [kN]			FR2 [kN]								
<b>A603 F603</b>	242.67	5.8	3600	2.17	4.0	22.0	90	100	112	132						
	215.56	6.5	3500	2.38	4.0	22.0	90	100	112	132						
	194.31	7.2	3500	2.64	4.0	22.0	90	100	112	132						
	181.13	7.7	3500	2.83	4.0	22.0	90	100	112	132						
	160.90	8.7	3500	3.19	3.9	22.0	90	100	112	132						
	143.57	9.8	3500	3.57	3.9	22.0	90	100	112	132						
	134.25	10.4	3500	3.82	3.9	22.0		100	112	132	160					
	121.02	11.6	3500	4.24	3.9	22.0		100	112	132	160					
	100.21	14.0	3500	5.12	3.9	22.0		100	112	132	160					
	93.60	15.0	3500	5.48	3.8	22.0		100	112	132	160					
	84.37	16.6	3500	6.08	3.8	22.0		100	112	132	160					
	79.98	17.5	3500	6.42	3.8	22.0		100	112	132	160					
	69.87	20.0	3500	7.34	3.7	22.0		100	112	132	160					
	55.75	25.1	3500	9.20	3.7	22.0				132	160					
	<b>A602 F602</b>	50.91	27.5	3300	9.50	3.6	22.0	100	112	132						
45.27		30.9	3300	10.69	3.6	22.0	100	112	132	160						
40.81		34.3	3300	11.85	3.5	21.7	100	112	132	160						
38.00		36.8	2800	10.80	3.6	22.0	100	112	132							
33.79		41.4	3200	13.88	3.4	20.0	100	112	132	160						
30.35		46.1	3200	15.46	3.4	18.9	100	112	132	160						
28.36		49.4	3300	17.06	3.3	17.8	100	112	132	160	180					
25.57		54.8	3300	18.92	3.2	16.8	100	112	132	160	180					
23.66		59.2	3300	20.45	3.1	16.1	100	112	132	160	180					
21.17		66.1	3200	22.16	3.1	15.4	100	112	132	160	180					
19.59		71.5	3200	23.94	3.0	14.7	100	112	132	160	180					
17.60		79.5	3200	26.65	2.9	13.8	100	112	132	160	180					
15.87		88.2	3200	29.56	2.7	12.9	100	112	132	160	180					
13.14		106.5	3100	34.59	2.5	11.8	100	112	132	160	180					
10.91		128.3	3000	40.31	2.2	10.8			132	160	180					
9.83		142.4	2800	41.74	2.2	10.8			132	160	180					
8.14		171.9	2500	45.01	2.0	10.6			132	160	180					
6.92		202.4	2300	48.74	1.8	10.4			132	160	180					
6.24	224.5	2000	47.02	1.9	10.9			132	160	180						
5.16	271.1	1800	51.10	1.7	10.5			132	160	180						

No PAM - IEC assembling on empty fields

63 PAM - IEC assembling available on numbered fields