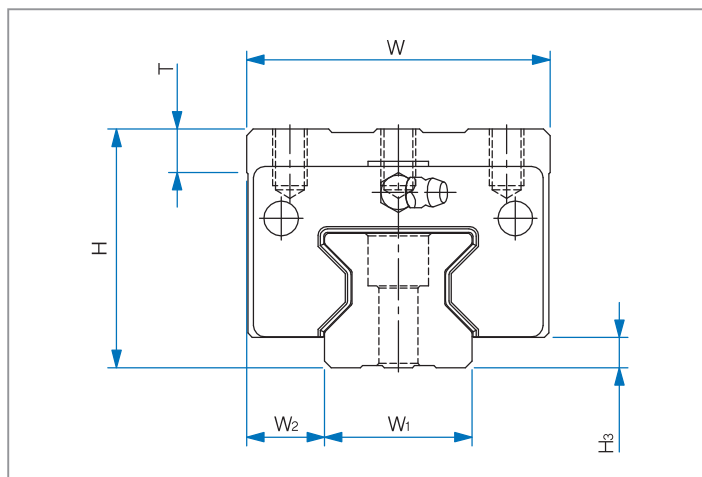
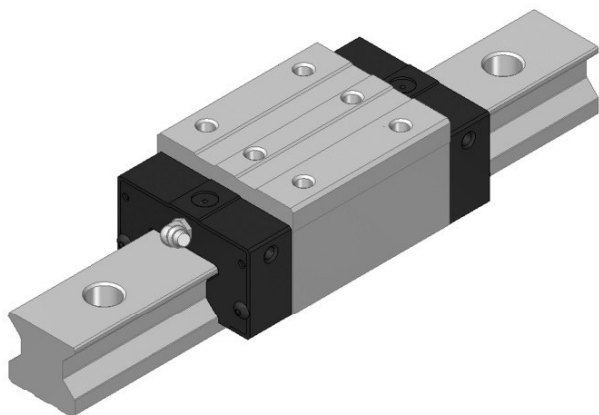
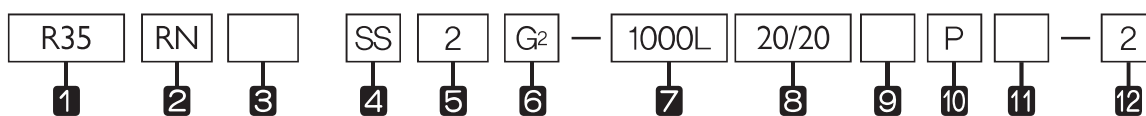


## R-RN Series, R-RL Series



| Model No. | External dimensions |         |          | Dimensions of block |    |          |                |    |      |    |                |                |                | Grease nipple | H <sub>3</sub> |
|-----------|---------------------|---------|----------|---------------------|----|----------|----------------|----|------|----|----------------|----------------|----------------|---------------|----------------|
|           | Height H            | Width W | Length L | B                   | C  | M x l    | L <sub>1</sub> | T  | N    | E  | θ <sub>1</sub> | N <sub>1</sub> | θ <sub>2</sub> |               |                |
| R 25RN    | 40                  | 48      | 92.2     | 35                  | 35 | M6 x 9   | 63.3           | 9  | 9.5  | 12 | 6              | 9.5            | 20.2           | B-M6F         | 6.5            |
| R 25RL    |                     |         | 110.2    |                     | 50 |          | 81.3           |    |      |    |                |                | 21.7           |               |                |
| R 30RN    | 45                  | 60      | 103.8    | 40                  | 40 | M8 x 11  | 71             | 9  | 9.5  | 12 | 6              | 9              | 22             | B-M6F         | 7              |
| R 30RL    |                     |         | 126.6    |                     | 60 |          | 93.8           |    |      |    |                |                | 23.4           |               |                |
| R 35RN    | 55                  | 70      | 118.3    | 50                  | 50 | M8 x 13  | 79.5           | 12 | 14.6 | 12 | 12             | 14.6           | 22             | B-M6F         | 7              |
| R 35RL    |                     |         | 142.3    |                     | 72 |          | 103.5          |    |      |    |                |                | 23             |               |                |
| R 45RN    | 70                  | 86      | 146.3    | 60                  | 60 | M10 x 20 | 101.7          | 20 | 18   | 16 | 12             | 18             | 27.9           | B-PT1/8       | 9.5            |
| R 45RL    |                     |         | 178.8    |                     | 80 |          | 134.2          |    |      |    |                |                | 34.1           |               |                |
| R 55RN    | 80                  | 100     | 168.6    | 75                  | 75 | M12 x 19 | 121.6          | 20 | 19   | 16 | 13.5           | 19             | 31.3           | B-PT1/8       | 10             |
| R 55RL    |                     |         | 207.7    |                     | 95 |          | 160.7          |    |      |    |                |                | 40.9           |               |                |

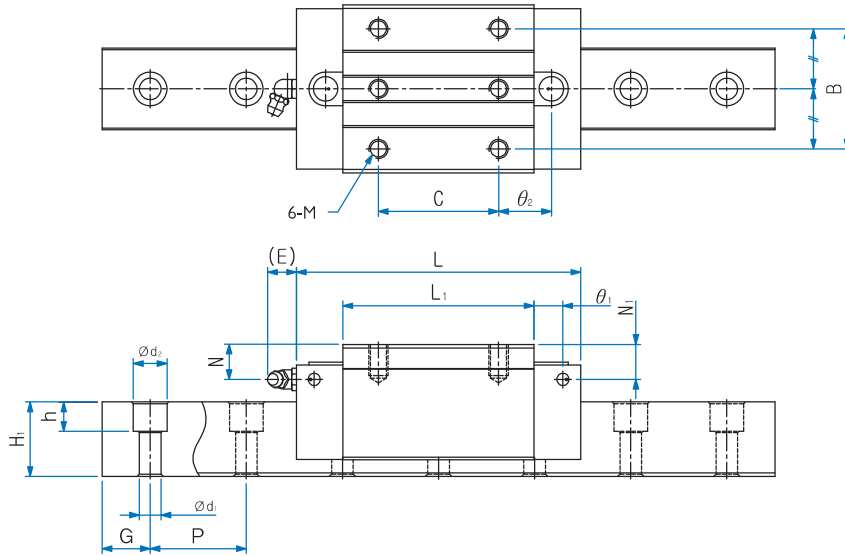
### Composition of Model Name & Number



- 1 Model No.
- 2 Type of block : RN-Rectangular standard type / RL-Rectangular long type / FN-Flange standard type / FL-Flange long type
- 3 No symbol-Standard block / E-Special block specification
- 4 Type of seal : SS-End seal+ Inside seal / ZZ-End seal+ Inside seal+ Metal scraper (\*1)
- 5 Number of blocks assembled in one shaft
- 6 Symbol of clearance : No symbol-Normal preload / G1-Light preload / G2-Heavy preload / Gs-Special preload (\*2)
- 7 Length of rail
- 8 Size of G value: standard G value has no symbol
- 9 No symbol-Rail counterbore type (top assembly) / A-Rail tap hole type (bottom assembly) (\*3)
- 10 Symbol of precision : No symbol-Moderate / H-High / P-Precision / SP-Super precision / UP-Ultra precision (\*4)
- 11 No symbol-Standard rail / E-special rail specification
- 12 Number of axes used in the same plane

(\*1) See Symbol List of Optional Parts at page 113. (\*2) See Radial Clearance at page 30.

(\*3) See Standard Tap Hole Type of Rail at page 105. (\*4) See Selection of Precision Class at page 35.



Unit: mm

| Dimensions of rail               |                |                          |      |            |                                   | Basic load rating |                      | Static allowance moment : N·m |               |                |               |                | Mass        |              |
|----------------------------------|----------------|--------------------------|------|------------|-----------------------------------|-------------------|----------------------|-------------------------------|---------------|----------------|---------------|----------------|-------------|--------------|
| Width<br>W <sub>1</sub><br>±0.05 | W <sub>2</sub> | Height<br>H <sub>1</sub> | G    | Pitch<br>P | d <sub>1</sub> ×d <sub>2</sub> ×h | C<br>kN           | C <sub>0</sub><br>kN | M <sub>p</sub>                |               | M <sub>y</sub> |               | M <sub>r</sub> | Block<br>kg | Rail<br>kg/m |
|                                  |                |                          |      |            |                                   |                   |                      | 1 block                       | Double blocks | 1 block        | Double blocks | 1 block        |             |              |
| 23                               | 12.5           | 24                       | 20   | 30         | 7×11×9.7                          | 29.1              | 56.2                 | 0.570                         | 3.090         | 0.570          | 3.090         | 0.820          | 0.7         | 3.1          |
|                                  |                |                          |      |            |                                   | 35.6              | 73.1                 | 0.925                         | 4.949         | 0.925          | 4.949         | 1.065          | 0.9         |              |
| 28                               | 16             | 28                       | 20   | 40         | 9×14×12                           | 44.4              | 87.3                 | 0.985                         | 5.395         | 0.985          | 5.395         | 1.470          | 1.2         | 4.4          |
|                                  |                |                          |      |            |                                   | 55.0              | 114.8                | 1.640                         | 8.946         | 1.640          | 8.946         | 1.935          | 1.5         |              |
| 34                               | 18             | 31                       | 20   | 40         | 9×14×12                           | 61.0              | 114.0                | 1.460                         | 7.972         | 1.460          | 7.972         | 2.345          | 2.0         | 6.2          |
|                                  |                |                          |      |            |                                   | 75.6              | 150.0                | 2.450                         | 13.036        | 2.450          | 13.036        | 3.090          | 2.5         |              |
| 45                               | 20.5           | 38                       | 22.5 | 52.5       | 14×20×17                          | 103.8             | 202.0                | 3.265                         | 17.712        | 3.265          | 17.712        | 5.430          | 3.9         | 10.1         |
|                                  |                |                          |      |            |                                   | 132.3             | 276.2                | 5.840                         | 30.565        | 5.840          | 30.565        | 7.440          | 5.0         |              |
| 53                               | 23.5           | 43.5                     | 30   | 60         | 16×23×20                          | 146.9             | 278.0                | 5.390                         | 28.523        | 5.390          | 28.523        | 8.880          | 6.2         | 13.4         |
|                                  |                |                          |      |            |                                   | 181.9             | 380.3                | 8.960                         | 49.534        | 8.960          | 49.534        | 11.690         | 8.1         |              |

1N ≈ 0.102kgf

