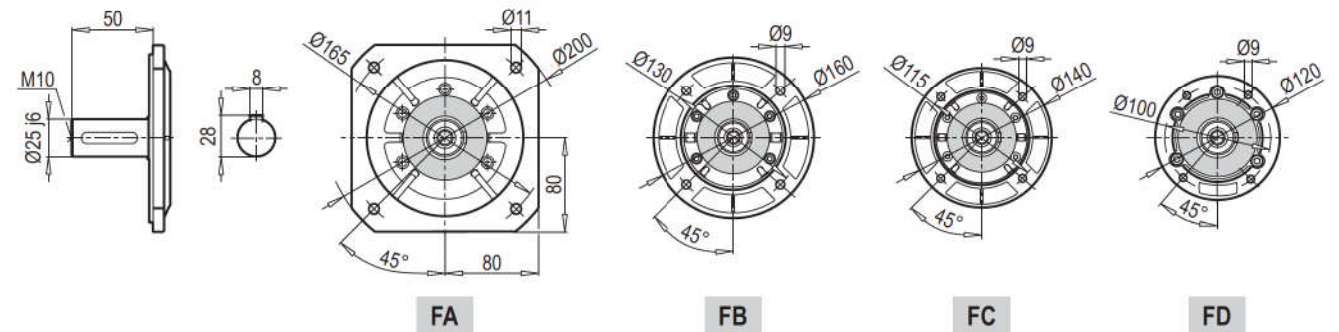
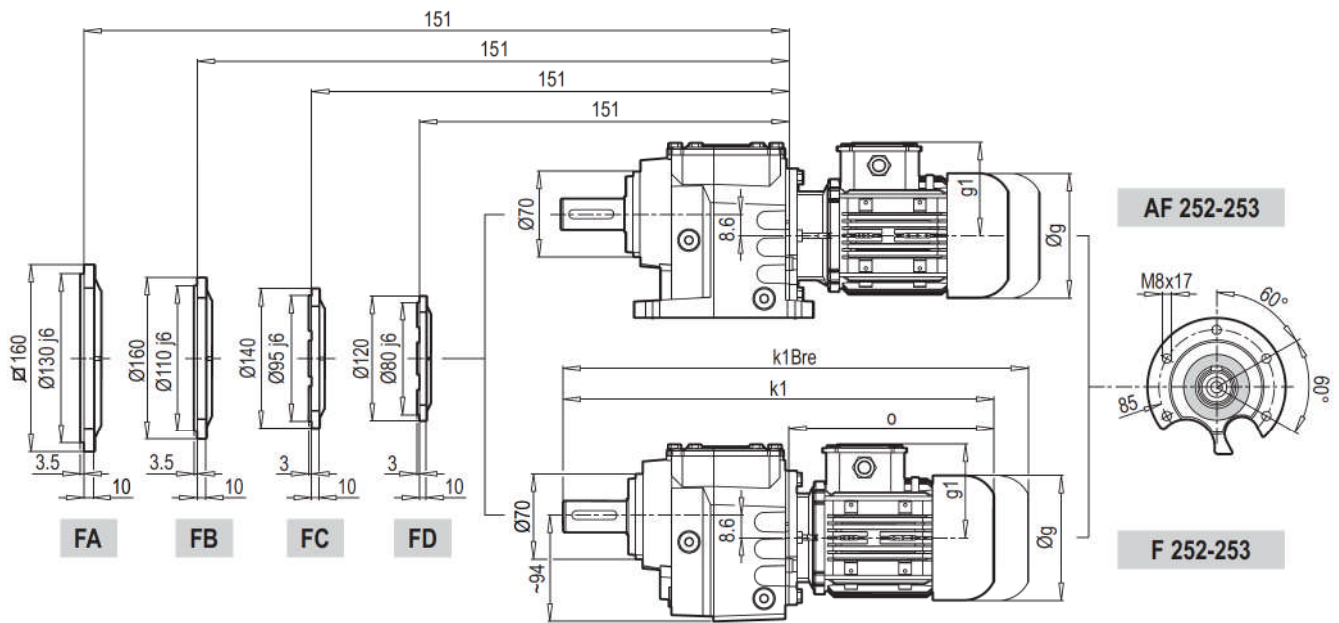
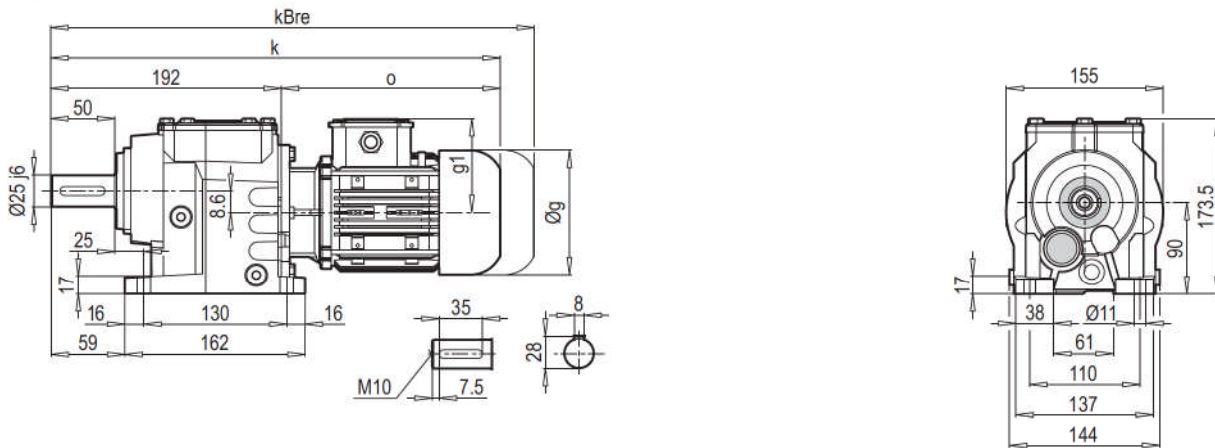
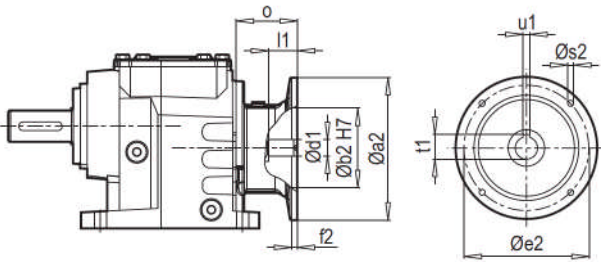


A 252-253

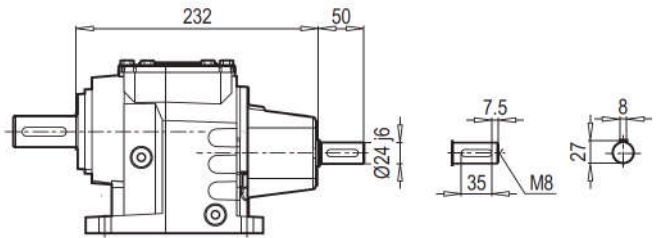


	63 M	71 M	80 M	90 S	90 L	100 L	112 M
g	124	140	159	193	193	217	232
g1	111	119	127	151	151	160	168
k	404	433	459	505	525	526	585
kBre	456	493	521	578	598	607	665
o	212	241	267	313	333	334	393
k1	413	442	468	514	534	535	594
k1Bre	465	502	590	587	607	616	674

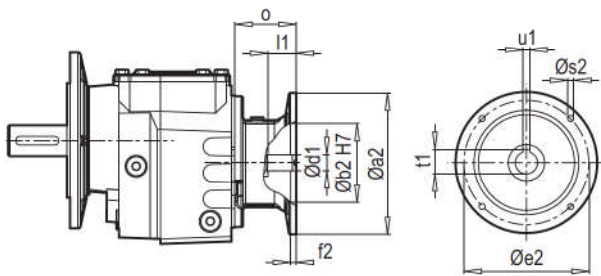
A 252-253 PAM B5/B14



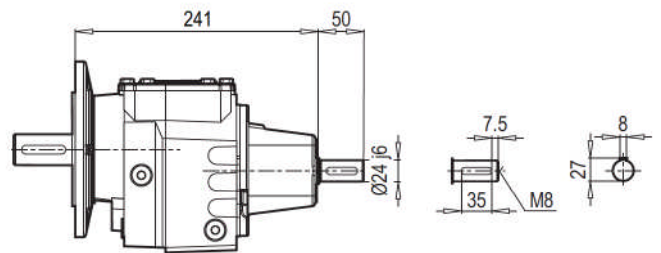
A 252-253 W



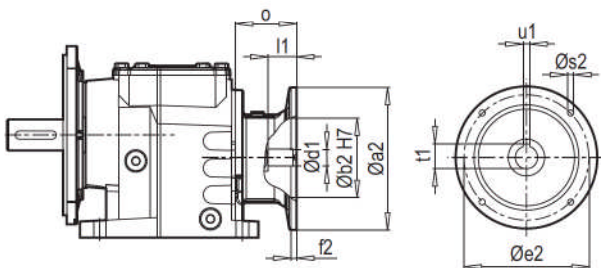
F 252-253 PAM B5/B14



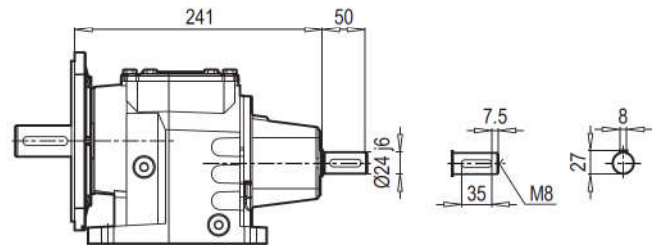
F 252-253 W



AF 252-253 PAM B5/B14



AF 252-253 W






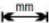



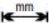









W ~ Kg	
A/F 252 - 253	14

Tip / Type Typ / Tipo Type / Tipo	PAM B5	Øa2	Øb2	Øe2	f2	Øs2	Ød1	l1	t1	u1	o
A/F 252 A/F 253	63	140	95	115	4.5	M8	11	25	12.8	4	57
	71	160	110	130	5	M8	14	32	16.3	5	69
	80	200	130	165	5	M10	19	42	21.8	6	90
	90	200	130	165	5	M10	24	52	27.3	8	90
	100	250	180	215	5.5	M12	28	62	31.3	8	105
	112	250	180	215	5.5	M12	28	62	31.3	8	105

~ Kg	
PAM B5	A/F 252 - 253
63	12
71	13
80	14
90	14
100	18
112	18

Tip / Type Typ / Tipo Type / Tipo	PAM B14	Øa2	Øb2	Øe2	f2	Øs2	Ød1	l1	t1	u1	o
A/F 252 A/F 253	63	90	60	75	2.5	6	11	25	12.8	4	57
	71	105	70	85	2.5	7	14	32	16.3	5	69
	80	120	80	100	3	7	19	42	21.8	6	90
	90	140	95	115	3	9	24	52	27.3	8	90
	100	160	110	130	3.5	9	28	62	31.3	8	105
	112	160	110	130	3.5	9	28	62	31.3	8	105

~ Kg	
PAM B14	A/F 252 - 253
63	11
71	12
80	13
90	13
100	14
112	14

Tip / Type / Typ / Tipo / Type / Tipo	iges	4-pol 50Hz 1400rpm n2 [min-1]	Mamax f _B =1 4 - pol. [Nm]	P _{1max} W f _B ≥ 1			PAM - IEC							
				4 - pol. 1400rpm [kW]	FR1 [kN]	FR2 [kN]	f _B →  39 - 107							
A253 F253 W   115 + PAM - IEC   115	245.76	5.7	200	0.12	1.4	5.5	63	71						
	197.21	7.1	200	0.15	1.4	5.5	63	71						
	178.56	7.8	200	0.16	1.4	5.5	63	71						
		143.29	9.8	200	0.20	1.4	5.5	63	71					
	 115	123.58	11.3	200	0.24	1.3	5.5	63	71	80	90			
		108.02	13.0	200	0.27	1.3	5.5	63	71					
	PAM - IEC	99.17	14.1	200	0.30	1.3	5.5	63	71	80	90			
		74.76	18.7	200	0.39	1.3	5.5	63	71	80	90			
	 115	66.56	21.0	200	0.44	1.3	5.5	63	71	80	90			
		53.41	26.2	200	0.55	1.3	5.5	63	71	80	90			
A252 F252 W   115 + PAM - IEC   115	47.93	29.2	200	0.61	1.3	5.5	71	80	90					
	42.00	33.3	200	0.70	1.2	5.5	71	80	90					
	38.46	36.4	200	0.76	1.2	5.5	71	80	90					
		33.38	41.9	200	0.88	1.2	5.5	71	80	90				
	 115	30.15	46.4	200	0.97	1.2	5.3	71	80	90				
		26.79	52.3	200	1.09	1.1	5.0	71	80	90				
	PAM - IEC	24.19	57.9	200	1.21	1.1	4.8	71	80	90				
		23.04	60.8	200	1.27	1.1	4.7	71	80	90	100	112		
	 115	20.19	69.3	200	1.45	1.1	4.4	71	80	90				
		18.49	75.7	200	1.59	1.0	4.2	71	80	90	100	112		
		17.05	82.1	190	1.63	1.0	4.1	71	80	90	100	112		
		14.91	93.9	170	1.67	1.0	4.1	71	80	90	100	112		
		13.94	100.4	170	1.79	1.0	3.9	71	80	90	100	112		
		11.97	117.0	145	1.78	1.0	3.9	71	80	90	100	112		
		10.32	135.7	140	1.99	0.9	3.7	71	80	90	100	112		
		9.02	155.2	130	2.11	0.9	3.6	71	80	90	100	112		
		7.93	176.5	125	2.31	0.8	3.4	71	80	90	100	112		
		6.36	220.0	105	2.42	0.8	3.3	71	80	90	100	112		
		4.80	291.8	95	2.90	0.7	3.0	71	80	90	100	112		

PAM - IEC bağlantısı yoktur - No PAM - IEC assembling on empty fields

63 PAM - IEC bağlantısı yapılır - PAM - IEC assembling available on numbered fields