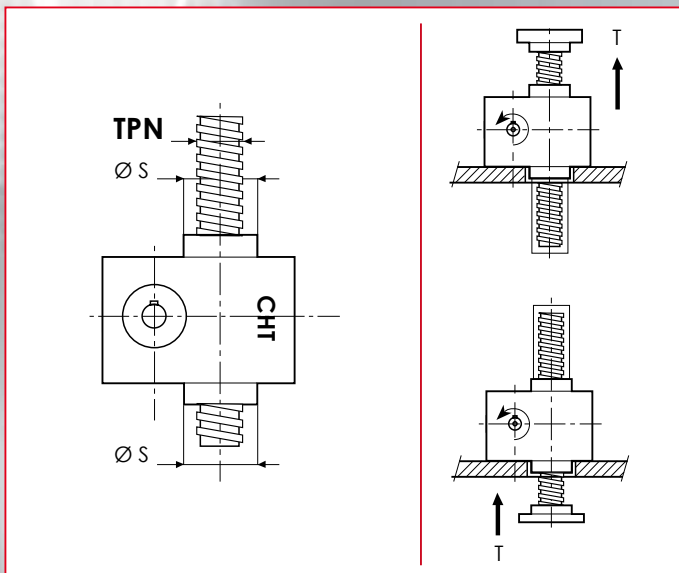
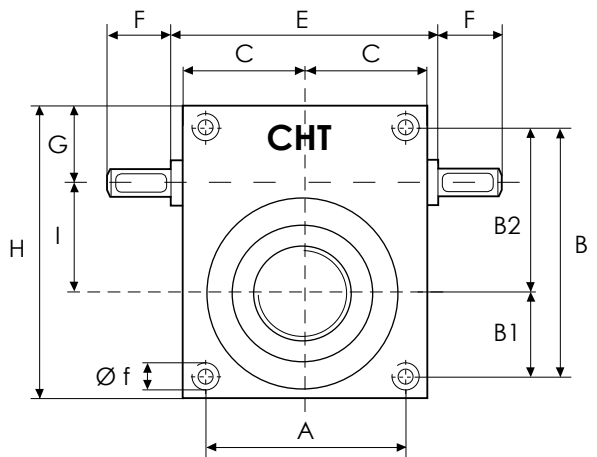
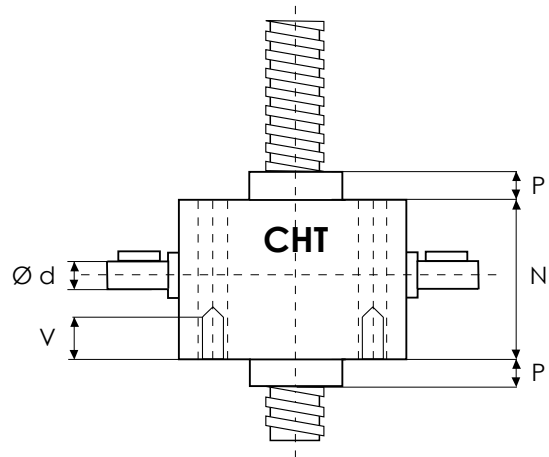


VITE TRASLANTE

TRANSLATING SCREW

GRANDEZZA MARTINETTO SCREW JACK MODEL		CHS 3
PORTATA LOAD	daN (Kg)	2500
VITE TPN TPN SCREW	DIAMETRO/DIAMETER mm PASSO/PITCH mm	30 6
RIDUZIONE GEAR RATIOS	VELOCE/FAST SPEED	5:1
	NORMALE/NORMAL SPEED	10:1
	LENTA/SLOW SPEED	30:1
CORSA VITE PER GIRO mm STROKE FOR INPUT REV.	VELOCE/FAST SPEED	1,20
	NORMAL/NORMAL SPEED	0,60
	LENTA/SLOW SPEED	0,20
RENDIMENTO EFFICIENCY	VELOCE/FAST SPEED	22,5%
	NORMALE/NORMAL SPEED	21,0%
	LENTA/SLOW SPEED	19,5%
PESO MARTINETTO (Kg)/JACK WEIGHT		9,0
PESO VITE TPN X 100 mm (Kg)/SCREW WEIGHT		0,48
MATERIALE CASSA/CASE MATERIAL		G25
QUANTITA' LUBRIFICANTE (Kg)/GREASE QTY		0,3
TIPO LUBRIFICANTE/GREASE TYPE	AGIP GR MU EP2	
TEMPERATURA ESERCIZIO OPERATING TEMPERATURE	-5° C +80° C	



	A	B	B1	B2	C	E	F	G	H
CHS3	102	131	48	83	64	-	39	42,5	150
	I	N	P	P1	V	Ø d	Ø f	Ø s	TPN
CHS3	50	90	25	20	*	20	10,4	60	30x6

\* fori filettati a richiesta

