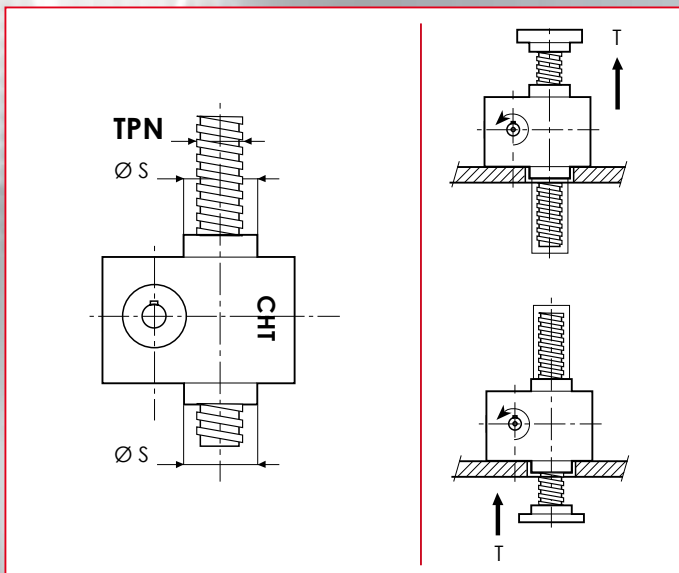
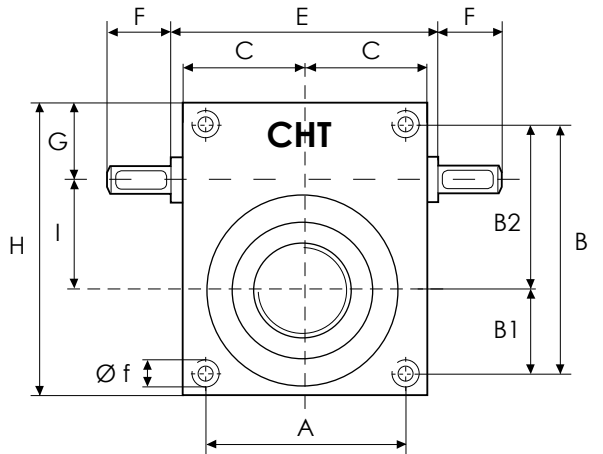
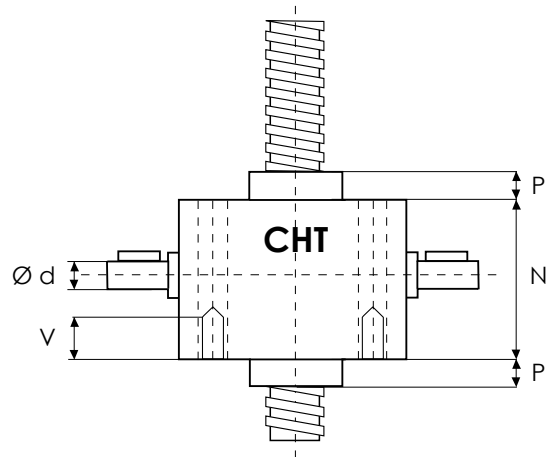


VITE TRASLANTE

TRANSLATING SCREW

GRANDEZZA MARTINETTO SCREW JACK MODEL		CHS 2
PORTATA LOAD	daN (Kg)	1000
VITE TPN TPN SCREW	DIAMETRO/DIAMETER mm PASSO/PITCH mm	20 4
RIDUZIONE GEAR RATIOS	VELOCE/FAST SPEED	5:1
	NORMALE/NORMAL SPEED	10:1
	LENTA/SLOW SPEED	30:1
CORSA VITE PER GIRO mm STROKE FOR INPUT REV.	VELOCE/FAST SPEED	0,80
	NORMALE/NORMAL SPEED	0,40
	LENTA/SLOW SPEED	0,13
RENDIMENTO EFFICIENCY	VELOCE/FAST SPEED	24,8%
	NORMALE/NORMAL SPEED	23,1%
	LENTA/SLOW SPEED	21,5%
PESO MARTINETTO (Kg)/JACK WEIGHT		4,0
PESO VITE TPN X 100 mm (Kg)/SCREW WEIGHT		0,20
MATERIALE CASSA/CASE MATERIAL		G25
QUANTITA' LUBRIFICANTE (Kg)/GREASE QTY		0,1
TIPO LUBRIFICANTE/GREASE TYPE	AGIP GR MU EP2	
TEMPERATURA ESERCIZIO OPERATING TEMPERATURE	-5° C +80° C	



	A	B	B1	B2	C	E	F	G	H
CHS2	80	85	30	55	49	-	23,5	33,5	102
	I	N	P	P1	V	Ød	Øf	Øs	TPN
CHS2	30	70	20	15	*	12	8,4	44	20x4

\* fori filettati a richiesta

