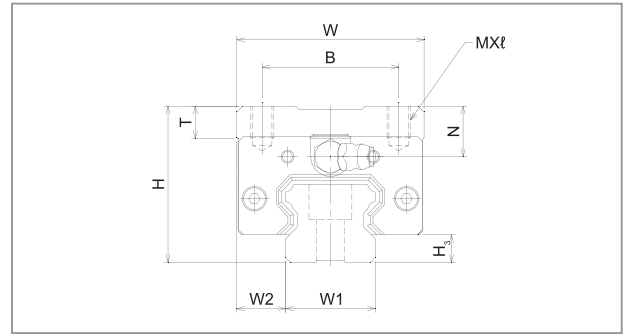
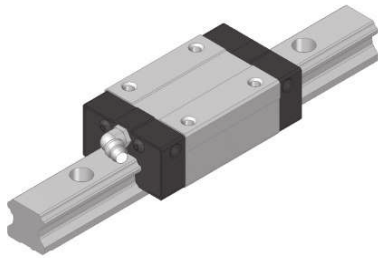
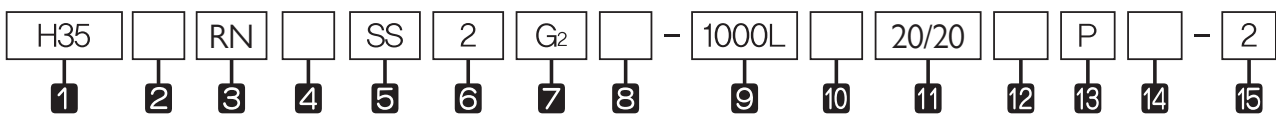


## H-RN Series, H-RL Series



Model No.	External dimensions			Dimensions of block											Grease nipple	H3
	Height H	Width W	Length L	B	C	MxL	L1	T	N	E	f	e	D			
H15RN	28	34	56.5	26	26	M4 x 5	40.8	6	10	4.7	7.7	3.25	3.3	A-M5	4.5	
H15RL	28	34	64.8	26	26	M4 x 5	49.1	6	10	4.7	7.7	3.25	3.3	A-M5	4.5	
H20RN	30	44	73.2	32	36	M5 x 6	53.1	8	7.5	10.7	6.7	4.25	3.3	B-M6F	6.0	
H20RL	30	44	89.1	32	50	M5 x 6	69	8	7.5	10.7	6.7	4.25	3.3	B-M6F	6.0	
H25RN	40	48	83.2	35	35	M6 x 8	58.3	8	13	10.2	12	5	3.3	B-M6F	7.0	
H25RL	40	48	103.1	35	50	M6 x 8	78.2	8	13	10.2	12	5	3.3	B-M6F	7.0	
H30RN	45	60	99.3	40	40	M8 x 10	70.8	8	10.3	9.8	8	5.8	5.2	B-M6F	7.5	
H30RL	45	60	121.5	40	60	M8 x 10	93	8	10.3	9.8	8	5.8	5.2	B-M6F	7.5	
H35RN	55	70	111.8	50	50	M8 x 12	80.8	10	15	9.7	13.5	6.5	5.2	B-M6F	9.0	
H35RL	55	70	137.2	50	72	M8 x 12	106.2	10	15	9.7	13.5	6.5	5.2	B-M6F	9.0	
H45RN	70	86	139.0	60	60	M10 x 17	101.9	15	20	16	18	8	3.3	B-PT1/8	10.0	
H45RL	70	86	170.8	60	80	M10 x 17	133.7	15	20	16	18	8	3.3	B-PT1/8	10.0	
H55RN	80	100	163.0	75	75	M12 x 18	117.5	18	21	16	18	9	3.3	B-PT1/8	13.0	
H55RL	80	100	201.1	75	95	M12 x 18	155.6	18	21	16	18	9	3.3	B-PT1/8	13.0	

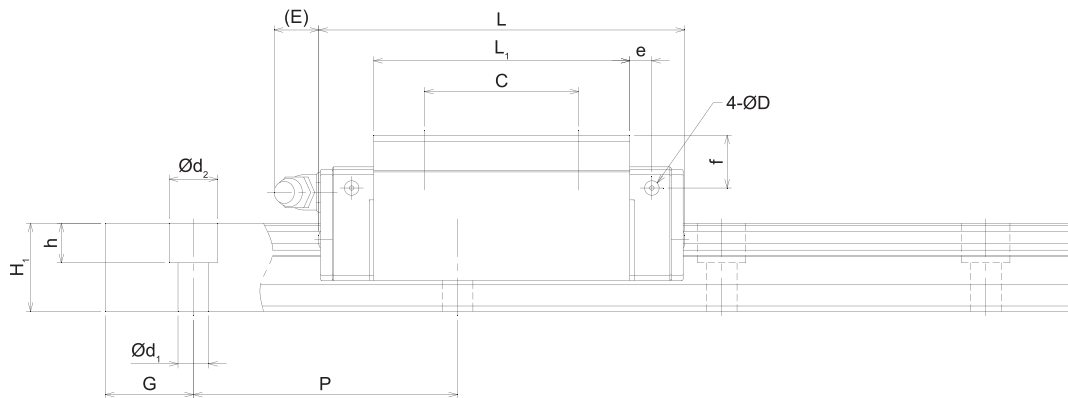
### Composition of Model Name & Number



- 1 Model No. of Linear Motion Guide
- 2 Material of block : No symbol–Standard material / M–Stainless
- 3 Type of block : RN–Rectangular standard type / RL–Rectangular long type/ FN–Flange standard type / FL–Flange long type
- 4 No symbol–Standard block / E–Special block specification
- 5 Type of seal : No symbol–No seal / UU–End seal / SS–End seal+Side seal+Inner seal / DD–Double seal+Side seal+Inner seal / ZZ–End seal+Side seal+Inner seal+Metal scraper / KK–Double seal+Side seal+Inner seal+Metal scraper / UULF–End seal+LF seal / SSLF–End seal+Side seal+Inner seal+LF seal / DDLF–Double seal+Side seal+Inner seal+LF seal / ZZLF–End seal+Side seal+Inner seal+Metal scraper+LF seal / KKLf–Double seal+Side seal+Inner seal+Metal scraper+LF seal (\*1)
- 6 Number of blocks assembled in one shaft
- 7 Symbol of clearance : No symbol–Normal preload / G1–Light preload / G2–Heavy preload / Gs–Special preload (\*2)
- 8 Material of end plate : No symbol - Standard material / I - Stainless / N - Aluminum
- 9 Length of rail
- 10 Material of rail : No symbol–Standard material / M–Stainless
- 11 Size of G value: standard G value has no symbol
- 12 No symbol–Rail counterbore type (top assembly) / A–Rail tap hole type (bottom assembly) (\*3)
- 13 Symbol of precision : No symbol–Moderate / H–High / P–Precision / SP–Super precision / UP–Ultra precision (\*4)
- 14 No symbol–Standard rail / E–special rail specification
- 15 Number of axes used in the same plane

(\*1) See Symbol List of Optional Parts at page 113. (\*2) See Radial Clearance at page 30.

(\*3) See Standard Tap Hole Type of Rail at page 61. (\*4) See Selection of Precision Class at page 32.



Unit : mm

Dimensions of rail						Basic load rating		Static allowance moment kN·m					Mass	
Width W <sub>1</sub> ±0.05	W <sub>2</sub>	Height H <sub>1</sub>	G	Pitch P	d <sub>1</sub> x d <sub>2</sub> x h	C kN	C <sub>0</sub> kN	M <sub>p</sub>		M <sub>y</sub>		M <sub>r</sub>	Block kg	Rail kg/m
								1 block	Double blocks	1 block	Double blocks	1 block		
15	9.5	13	20	60	4.5x7.5x5.3	12.6	16.2	0.115	0.552	0.115	0.552	0.129	0.18	1.3
15	9.5	13	20	60	4.5xx7.5x5.3	14.3	19.3	0.165	0.769	0.165	0.769	0.154	0.23	1.3
20	12	16.5	20	60	6x9.5x8.5	18.3	23.9	0.221	1.049	0.221	1.049	0.251	0.31	2.2
20	12	16.5	20	60	6x9.5x8.5	21.8	30.7	0.370	1.692	0.370	1.692	0.322	0.41	2.2
23	12.5	20	20	60	7x11x9	27.0	33.1	0.337	1.636	0.337	1.636	0.398	0.53	3.0
23	12.5	20	20	60	7x11x9	32.8	43.6	0.596	2.760	0.596	2.760	0.525	0.71	3.0
28	16	26	20	80	9x14x12	50.4	57.1	0.711	3.384	0.711	3.384	0.828	0.9	4.85
28	16	26	20	80	9x14x12	60.3	73.6	1.203	5.506	1.203	5.506	1.067	1.1	4.85
34	18	29	20	80	9x14x12	67.0	74.6	1.062	5.012	1.062	5.012	1.298	1.5	6.58
34	18	29	20	80	9x14x12	80.2	96.2	1.797	8.172	1.797	8.172	1.674	2.01	6.58
45	20.5	38	22.5	105	14x20x17	108.5	116.4	2.860	9.912	2.860	9.912	2.275	2.89	11.03
45	20.5	38	22.5	105	14x20x17	129.7	150.1	4.533	16.161	4.533	16.161	2.935	3.74	11.03
53	23.5	44	30	120	16x23x20	155.9	161.5	4.654	16.016	4.654	16.016	3.779	4.28	15.26
53	23.5	44	30	120	16x23x20	187.5	210.1	7.468	26.493	7.468	26.493	4.916	5.59	15.26

1N ≈ 0.102kgf

