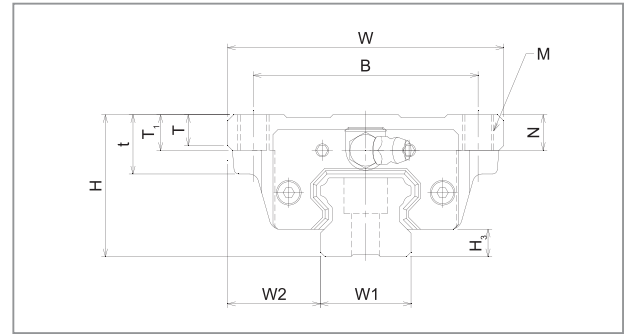
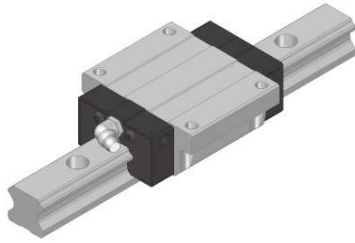
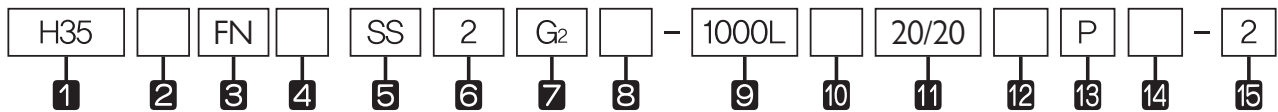


## H-FN Series, H-FL Series



Model No.	External dimensions			Dimensions of block													
	Height H	Width W	Length L	B	C	M	L <sub>1</sub>	t	T	T <sub>1</sub>	N	E	f	e	D	Grease nipple	H <sub>3</sub>
H 15FN	24	47	56.5	38	30	M5	40.8	-	7	11	6	4.7	3.7	3.25	3.3	A-M5	4.5
H 15FL	24	47	64.8	38	30	M5	49.1	-	7	11	6	4.7	3.7	3.25	3.3	A-M5	4.5
H 20FN	30	63	73.2	53	40	M6	53.1	-	9.2	10	7.5	10.7	6.7	4.25	3.3	B-M6F	6.0
H 20FL	30	63	89.1	53	40	M6	69	-	9.2	10	7.5	10.7	6.7	4.25	3.3	B-M6F	6.0
H 25FN	36	70	83.2	57	45	M8	58.3	-	11.5	16	9	10.2	8	5	3.3	B-M6F	7.0
H 25FL	36	70	103.1	57	45	M8	78.2	-	11.5	16	9	10.2	8	5	3.3	B-M6F	7.0
H 30FN	42	90	99.3	72	52	M10	70.8	-	9.5	18	7.3	9.8	5	5.8	5.2	B-M6F	7.5
H 30FL	42	90	121.5	72	52	M10	93	-	9.5	18	7.3	9.8	5	5.8	5.2	B-M6F	7.5
H 35FN	48	100	111.8	82	62	M10	80.8	-	12.5	21	8	9.7	6.5	6.5	5.2	B-M6F	9.0
H 35FL	48	100	137.2	82	62	M10	106.2	-	12.5	21	8	9.7	6.5	6.5	5.2	B-M6F	9.0
H 45FN	60	120	139.0	100	80	M12	101.9	25	13	15	10	16	8	8	3.3	B-PT1/8	10.0
H 45FL	60	120	170.8	100	80	M12	133.7	25	13	15	10	16	8	8	3.3	B-PT1/8	10.0
H 55FN	70	140	163.0	116	95	M14	117.5	29	19	17	11	16	8	9	3.3	B-PT1/8	13.0
H 55FL	70	140	201.1	116	95	M14	155.6	29	19	17	11	16	8	9	3.3	B-PT1/8	13.0

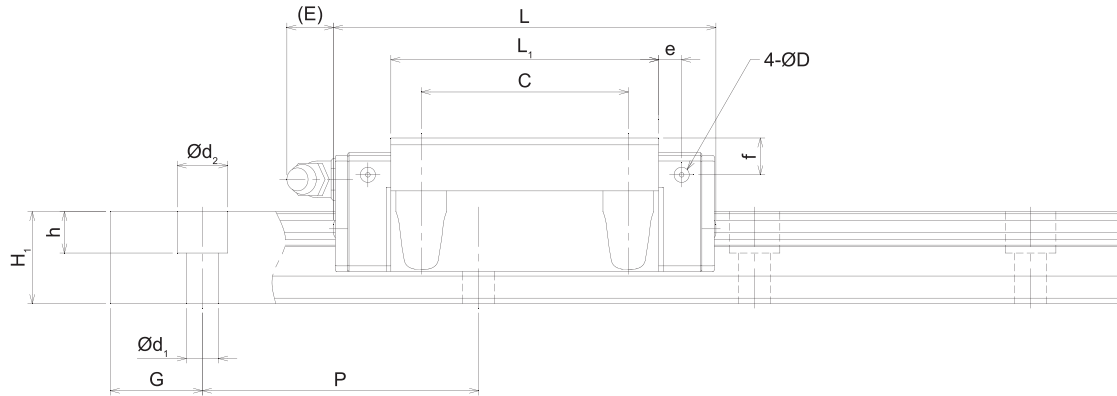
### Composition of Model Name & Number



- 1 Model No. of Linear Motion Guide
- 2 Material of block : No symbol–Standard material / M–Stainless
- 3 Type of block : RN–Rectangular standard type / RL–Rectangular long type/ FN–Flange standard type / FL–Flange long type
- 4 No symbol–Standard block / E–Special block specification
- 5 Type of seal : No symbol–No seal / UU–End seal / SS–End seal+Side seal+Inner seal / DD–Double seal+Side seal+Inner seal / ZZ–End seal+Side seal+Inner seal+Metal scraper / KK–Double seal+Side seal+Inner seal+Metal scraper / UULF–End seal+LF seal / SSLF–End seal+Side seal+Inner seal+LF seal / DDLF–Double seal+Side seal+Inner seal+LF seal / ZZLF–End seal+Side seal+Inner seal+Metal scraper+LF seal / KKLf–Double seal+Side seal+Inner seal+Metal scraper+LF seal (\*1)
- 6 Number of blocks assembled in one shaft
- 7 Symbol of clearance : No symbol–Normal preload / G<sub>1</sub>–Light preload / G<sub>2</sub>–Heavy preload / G<sub>s</sub>–Special preload (\*2)
- 8 Material of end plate : No symbol - Standard material / I - Stainless / N - Aluminum
- 9 Length of rail
- 10 Material of rail : No symbol–Standard material / M–Stainless
- 11 Size of G value: standard G value has no symbol
- 12 No symbol–Rail counterbore type (top assembly) / A–Rail tap hole type (bottom assembly) (\*3)
- 13 Symbol of precision : No symbol–Moderate / H–High / P–Precision / SP–Super precision / UP–Ultra precision (\*4)
- 14 No symbol–Standard rail / E–special rail specification
- 15 Number of axes used in the same plane

(\*1) See Symbol List of Optional Parts at page 113. (\*2) See Radial Clearance at page 30.

(\*3) See Standard Tap Hole Type of Rail at page 61. (\*4) See Selection of Precision Class at page 32.



Unit : mm

Width W <sub>1</sub> ±0.05	Dimensions of rail					Basic load rating		Static allowance moment kN·m					Mass	
	W <sub>2</sub>	Height H <sub>1</sub>	G	Pitch P	d <sub>1</sub> x d <sub>2</sub> x h	C kN	C <sub>0</sub> kN	M <sub>p</sub>		M <sub>y</sub>		M <sub>r</sub>	Block kg	Rail kg/m
								1 block	Double blocks	1 block	Double blocks	1 block		
15	16	13	20	60	4.5x7.5x5.3	12.6	16.2	0.115	0.552	0.115	0.552	0.129	0.19	1.3
15	16	13	20	60	4.5x7.5x5.3	14.3	19.3	0.165	0.769	0.165	0.769	0.154	0.24	1.3
20	21.5	16.5	20	60	6x9.5x8.5	18.3	23.9	0.221	1.049	0.221	1.049	0.251	0.41	2.2
20	21.5	16.5	20	60	6x9.5x8.5	21.8	30.7	0.370	1.692	0.370	1.692	0.322	0.54	2.2
23	23.5	20	20	60	7x11x9	27.0	33.1	0.337	1.636	0.337	1.636	0.398	0.61	3.0
23	23.5	20	20	60	7x11x9	32.8	43.6	0.596	2.760	0.596	2.760	0.525	0.82	3.0
28	31	26	20	80	9x14x12	50.4	57.1	0.711	3.384	0.711	3.384	0.828	1.1	4.85
28	31	26	20	80	9x14x12	60.3	73.6	1.203	5.506	1.203	5.506	1.067	1.3	4.85
34	33	29	20	80	9x14x12	67.0	74.6	1.062	5.012	1.062	5.012	1.298	1.6	6.58
34	33	29	20	80	9x14x12	80.2	96.2	1.797	8.172	1.797	8.172	1.674	2.01	6.58
45	37.5	38	22.5	105	14x20x17	108.5	116.4	2.860	9.912	2.860	9.912	2.275	2.83	11.03
45	37.5	38	22.5	105	14x20x17	129.7	150.1	4.533	16.161	4.533	16.161	2.935	3.70	11.03
53	43.5	44	30	120	16x23x20	155.9	161.5	4.654	16.016	4.654	16.016	3.779	4.36	15.26
53	43.5	44	30	120	16x23x20	187.5	210.1	7.468	26.493	7.468	26.493	4.916	5.76	15.26

