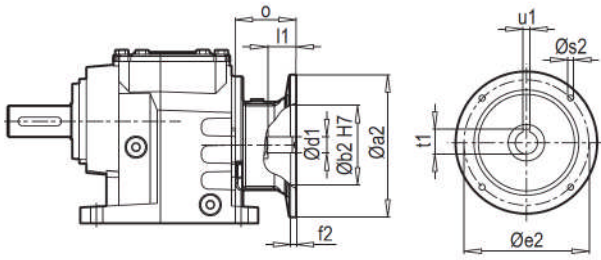
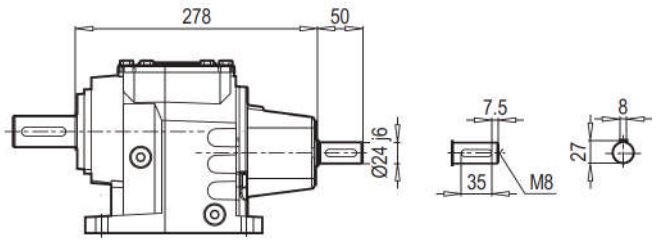


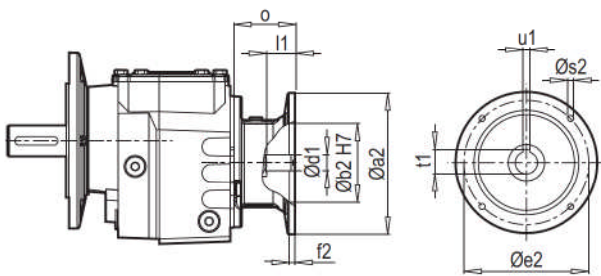
A 352-353 PAM B5/B14



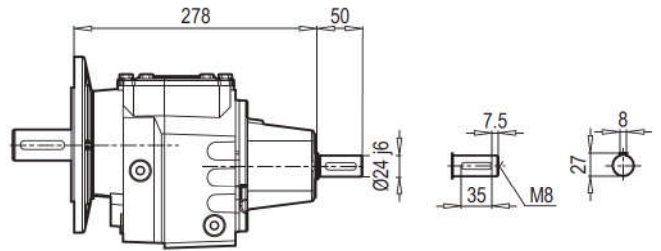
A 352-353 W



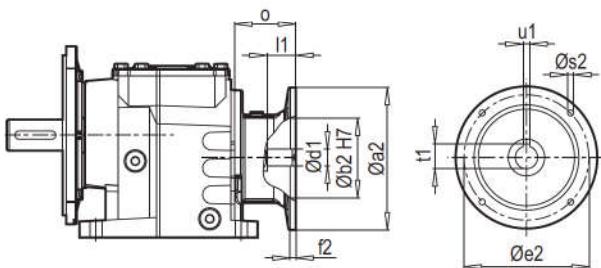
F 352-353 PAM B5/B14



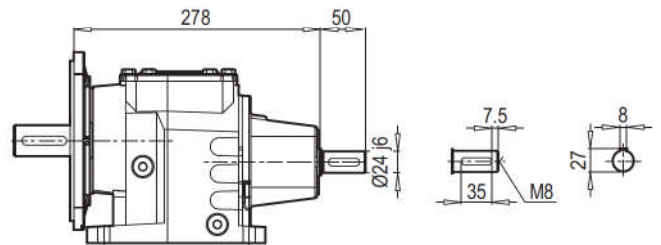
F 352-353 W



AF 352-353 PAM B5/B14



AF 352-353 W



W ~ Kg	
A/F 352-353	22

Typ / Type Tip / Tipo Type / Tipo	PAM B5	Øa2	Øb2	Øe2	f2	Øs2	Ød1	l1	t1	u1	o
A/F 352 A/F 353	63	140	95	115	4.5	M8	11	25	12.8	4	57
	71	160	110	130	5	M8	14	32	16.3	5	69
	80	200	130	165	5	M10	19	42	21.8	6	90
	90	200	130	165	5	M10	24	52	27.3	8	90
	100	250	180	215	5.5	M12	28	62	31.3	8	105
	112	250	180	215	5.5	M12	28	62	31.3	8	105

~ Kg	
PAM B5	A/F 352-353
63	20
71	21
80	22
90	22
100	26
112	26

Typ / Type Tip / Tipo Type / Tipo	PAM B14	Øa2	Øb2	Øe2	f2	Øs2	Ød1	l1	t1	u1	o
A/F 352 A/F 353	63	90	60	75	2.5	6	11	25	12.8	4	57
	71	105	70	85	2.5	7	14	32	16.3	5	69
	80	120	80	100	3	7	19	42	21.8	6	90
	90	140	95	115	3	9	24	52	27.3	8	90
	100	160	110	130	3.5	9	28	62	31.3	8	105
	112	160	110	130	3.5	9	28	62	31.3	8	105

~ Kg	
PAM B14	A/F 352-353
63	19
71	20
80	21
90	21
100	23
112	23

Type Typ / Tipo / Type / Tipo	iges	4-pol 50Hz 1400rpm n2 [min-1]	M _{amax} f _B =1 4 - pol. [Nm]	P _{1max}		W	f _B ≥ 1	PAM - IEC											
				4 - pol. 1400rpm [kW]	FR1 [kN]			FR2 [kN]											
A353 F353	268.00	5.2	500	0.27	1.4	8.0	63	71											
	216.67	6.5	500	0.34	1.3	8.0	63	71											
	194.72	7.2	500	0.38	1.3	8.0	63	71											
	157.42	8.9	500	0.47	1.3	8.0	63	71											
	134.76	10.4	500	0.54	1.3	8.0	63	71	80	90									
	108.95	12.9	500	0.67	1.3	8.0	63	71	80	90									
	90.51	15.5	500	0.81	1.3	8.0	63	71	80	90									
	72.58	19.3	500	1.01	1.2	8.0	63	71	80	90									
	58.68	23.9	500	1.25	1.2	8.0	63	71	80	90									
A352 F352	56.95	24.6	490	1.26	1.2	8.0	71	80	90										
	49.88	28.1	490	1.44	1.1	8.0	71	80	90										
	46.04	30.4	490	1.56	1.1	8.0	71	80	90										
	39.59	35.4	490	1.81	1.1	8.0	71	80	90	100	112								
	33.50	41.8	490	2.14	1.0	8.0	71	80	90										
	32.01	43.7	490	2.24	1.0	8.0	71	80	90	100	112								
	28.89	48.5	490	2.49	1.0	7.9	71	80	90	100	112								
	26.59	52.6	490	2.70	0.9	7.6	71	80	90	100	112								
	25.13	55.7	470	2.74	0.9	7.5	71	80	90	100	112								
	22.03	63.6	470	3.13	0.9	7.1	71	80	90	100	112								
	20.31	68.9	460	3.32	0.8	6.9	71	80	90	100	112								
	18.30	76.5	460	3.68	0.8	6.5	71	80	90	100	112								
	16.88	83.0	450	3.91	0.7	6.3	71	80	90	100	112								
	14.52	96.4	430	4.34	0.6	6.0		80	90	100	112								
	11.74	119.3	390	4.87	0.6	5.7		80	90	100	112								
	9.75	143.6	370	5.56	0.4	5.3		80	90	100	112								
	8.73	160.4	340	5.71	0.4	5.2		80	90	100	112								
	7.06	198.4	290	6.02	0.3	5.1		80	90	100	112								
	5.86	238.8	260	6.50	0.3	4.8		80	90	100	112								

No PAM - IEC assembling on empty fields

PAM - IEC assembling available on numbered fields