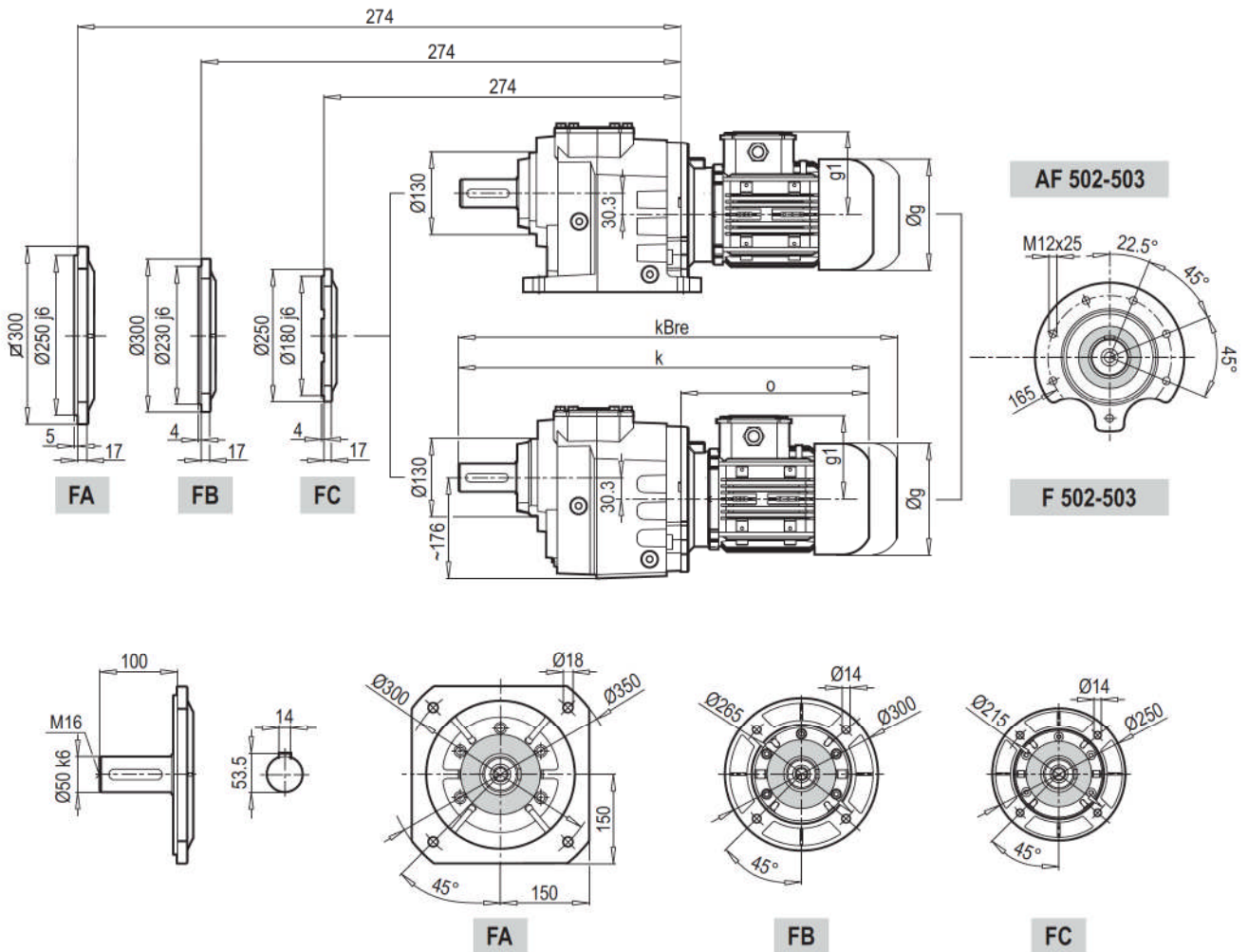
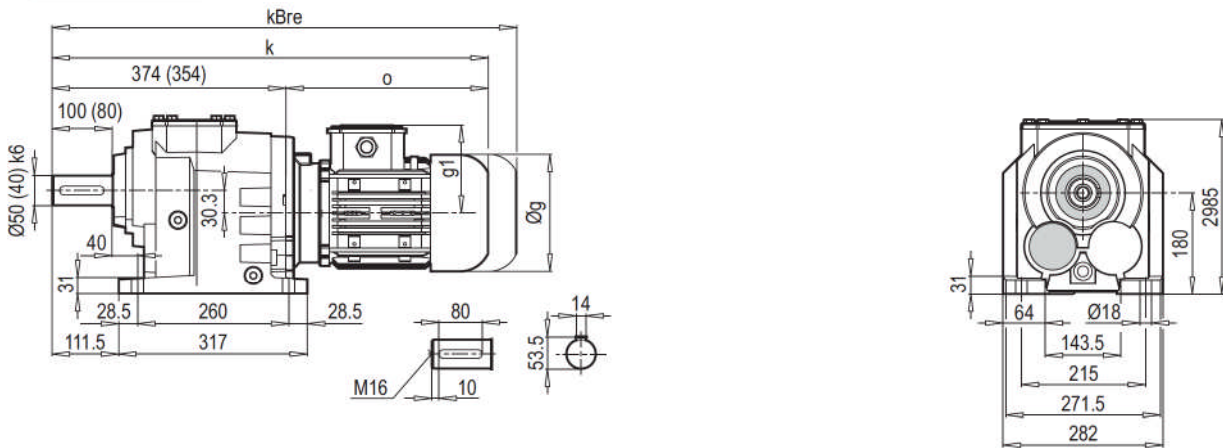
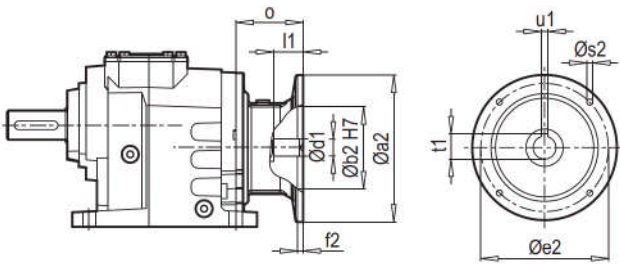


A 502-503

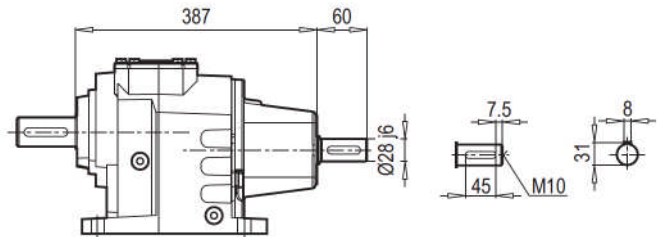


	80 M	90 S	90 L	100 L	112 M	132 S	132 M	160 M/L
g	159	193	193	217	232	279	279	323
g1	127	151	151	160	168	182	182	200
k	621 (601)	667 (647)	687 (667)	710 (690)	763 (743)	770 (750)	805 (785)	892 (872)
kBre	683 (663)	740 (720)	760 (740)	791 (771)	843 (823)	878 (858)	946 (926)	1044 (1024)
o	247	293	313	336	389	396	431	518

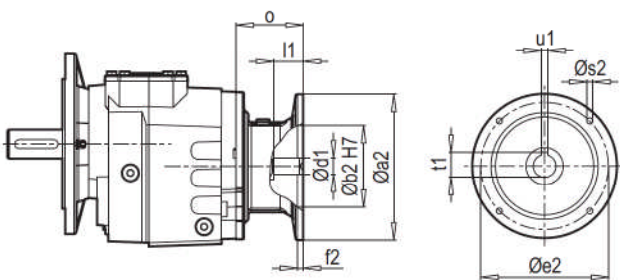
A 502-503 PAM B5/B14



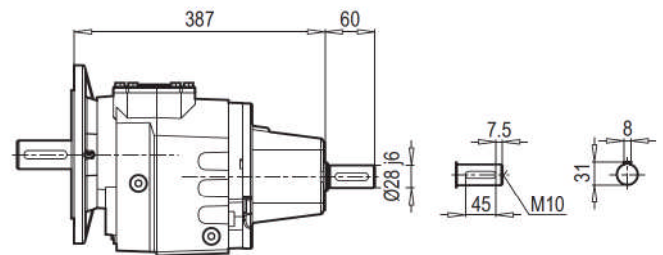
A 502-503 W



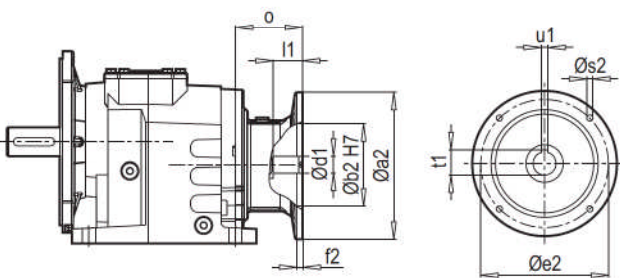
F 502-503 PAM B5/B14



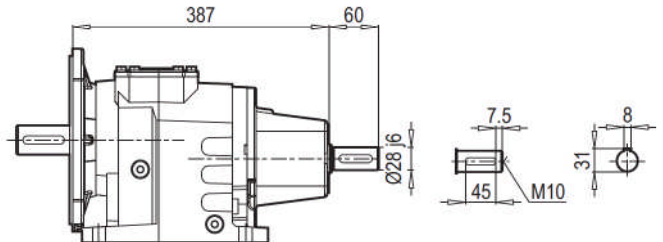
F 502-503 W



AF 502-503 PAM B5/B14



AF 502-503 W



W ~ Kg	
A/F 502-503	54

Typ / Type Tip / Tipo Type / Tipo	PAM B5	Øa2	Øb2	Øe2	f2	Øs2	Ød1	l1	t1	u1	o
A/F 502 A/F 503	80	200	130	165	5	M10	19	42	21.8	6	70
	90	200	130	165	5	M10	24	52	27.3	8	70
	100	250	180	215	5.5	M12	28	62	31.3	8	85
	112	250	180	215	5.5	M12	28	62	31.3	8	85
	132	300	230	265	5.5	M12	38	82	41.3	10	110
	160	350	250	300	7	M16	42	112	45.3	12	158

~ Kg	
PAM B5	A/F 502-503
80	52
90	52
100	54
112	54
132	58
160	65

Typ / Type Tip / Tipo Type / Tipo	PAM B14	Øa2	Øb2	Øe2	f2	Øs2	Ød1	l1	t1	u1	o
A/F 502 A/F 503	80	120	80	100	3	7	19	42	21.8	6	70
	90	140	95	115	3	9	24	52	27.3	8	70
	100	160	110	130	3.5	9	28	62	31.3	8	85
	112	160	110	130	3.5	9	28	62	31.3	8	85
	132	200	130	165	3.5	11	38	82	41.3	10	110

~ Kg	
PAM B14	A/F 502-503
80	48
90	48
100	50
112	50
132	55

Type Typ / Tipo / Type / Tipo	iges	4-pol 50Hz 1400rpm n2 [min-1]	Mamax f _B =1 4 - pol. [Nm]	P _{1max}		W f _B ≥ 1	PAM - IEC								
				4 - pol. 1400rpm [kW]	FR1 [kN]		FR2 [kN]								
A503 F503	222.59	6.3	1800	1.19	2.9	18.0	80	90	90						
	194.86	7.2	1800	1.35	2.9	18.0	80	90	90						
	178.98	7.8	1800	1.47	2.8	18.0	80	90	90						
	162.21	8.6	1800	1.63	2.8	18.0	80	90	90						
	154.52	9.1	1800	1.71	2.8	18.0	80	90	90	100	112	132			
	142.00	9.9	1800	1.86	2.8	18.0	80	90	90	100	112				
	124.25	11.3	1800	2.12	2.8	18.0	80	90	90	100	112	132			
	112.61	12.4	1800	2.34	2.7	18.0	80	90	90	100	112	132			
	97.80	14.3	1800	2.70	2.7	18.0	80	90	90	100	112	132			
	85.33	16.4	1800	3.09	2.7	18.0	80	90	90	100	112	132			
	78.64	17.8	1800	3.36	2.6	18.0	80	90	90	100	112	132			
	71.27	19.6	1800	3.70	2.6	18.0	80	90	90	100	112	132			
	56.21	24.9	1600	4.17	2.5	18.0	80	90	90	100	112	132			
	A502 F502	48.77	28.7	1600	4.81	2.4	18.0	80	90	100	112	132			
43.32		32.3	1600	5.41	2.4	18.0	80	90	100	112	132				
39.21		35.7	1600	5.98	2.3	17.7	80	90	100	112	132				
34.83		40.2	1600	6.73	2.2	16.7	80	90	100	112	132				
31.57		44.3	1600	7.43	2.1	16.0	80	90	100	112	132				
28.26		49.5	1600	8.30	2.0	15.1	80	90	100	112	132				
26.98		51.9	1600	8.69	2.0	14.8			100	112	132	160			
23.14		60.5	1600	10.14	1.8	13.7			100	112	132	160			
21.69		64.5	1600	10.81	1.7	13.2			100	112	132	160			
19.66		71.2	1600	11.93	1.6	12.6			100	112	132	160			
18.81		74.4	1500	11.69	1.6	12.7			100	112	132	160			
16.86		83.0	1500	13.04	1.5	12.1			100	112	132	160			
15.13		92.6	1500	14.54	1.3	11.4			100	112	132	160			
13.71		102.1	1400	14.97	1.3	11.3			100	112	132	160			
11.20		125.0	1100	14.39	1.3	11.5					132	160			
9.01		155.4	900	14.65	1.3	11.2					132	160			
8.16		171.5	800	14.36	1.3	11.2					132	160			
7.55		185.5	800	15.54	1.2	10.8					132	160			
6.07		230.6	700	16.91	1.0	10.3					132	160			
5.50		254.5	700	18.65	0.8	9.8					132	160			

No PAM - IEC assembling on empty fields

63 PAM - IEC assembling available on numbered fields